



EAGLE OCEAN MARINE CIRCULAR

MAY 24, 2023

TO ALL INSUREDS AND BROKERS

Dear Colleagues:

PEOPLE'S REPUBLIC OF CHINA (PRC): COASTAL FISH FARMS

Attached is a summary update of the distribution, characteristics and navigational coordinates of fish farms along the PRC coast for Members' reference.

The update also provides relevant loss prevention recommendations and is presented in both [English](#) and [Mandarin](#).

Eagle Ocean Marine recommends that Members take note of this information and be guided accordingly and thank our correspondent Huatai Insurance Agency & Consulting Services, Ltd. for their assistance in providing this update.

Yours faithfully,

Dorothea Ioannou, CEO
Eagle Ocean Agencies, Inc.

Eagle Ocean Marine is an American Club fixed premium facility offering gold standard International Group club service, underpinned by the impeccable security of reinsurance at Lloyd's.





**HUATAI
MARINE**

CIRCULAR

www.huataimarine.com

pni.bj@huatai-serv.com

Duty Phone: +86 13701125026

Circular Ref. No.: PNI[2023]04

Date: 23 May 2023



Summary of the Distribution of Major Fishery Farms along the Coast of China

Dear Sir/Madam,

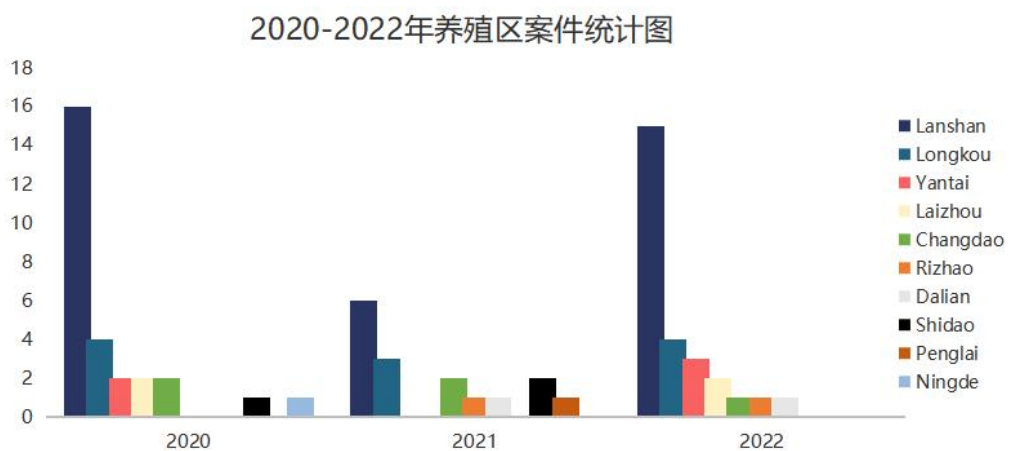
The increase of number of cases in relation to fishery farms along the coast of China in 2022 has attracted great attention from the Club and their Members. At the request of the Club, we are publishing this Circular to update the distribution, characteristics and coordinates of fishery farms along the coast of China and provide loss prevention suggestions for the Club and their Members' reference.

This Circular will supersede all previous Circulars regarding fishery farms issued by Huatai (PNI1508, PNI1706, PNI1813, PNI1903, PNI1906, PNI[2021]10, PNI[2021]13, PNI[2022]09). For the introduction of fishery farms along the coast of

China, the Club/Owners only need to refer to this Circular.

Number and Distribution of Cases Related to Fishery Farms(2020-2022)

The following figure shows the port distribution of cases regarding ships accidentally entering fishery farms handled by Huatai in the past three years (2020-2022).



In the above figure, except for Dalian and Ningde, all other ports are under the jurisdiction of Shandong Province. Lanshan Port remains the port with the highest number of cases, falling to 6 in 2021 but rising to 15 in 2022.

Reasons for the High Incidence of Fishery Farm Claims in Lanshan Port

We opine that the high incidence of such cases in Lanshan Port may be related to the following factors:

- (1) Compared with other ports, the quantity of fishery farms off Lanshan Port is larger and the distribution is wider.
- (2) The fishery farms are located at the junction of Rizhao, Lanshan and

Lianyungang Port. The navigation environment for merchant ships and fishing boats is complex, and the maneuverable water area for merchant ships to avoid collision with other ships and fishery farms is severely restricted.

- (3) Ships have not marked the scope of fishery farms on the Chart according to the Huatai Circular concerning the distribution of fishery farms and the information provided by the agent in order to make a reasonable navigation plan to avoid the area.
- (4) Seafarers are lack of psychological vigilance on the fact that large number of fishery farms and fishing boats exist in these water areas. As the consequence, when emergency situations occur, timely and reasonable measures are not taken to avoid accidents.
- (5) The risk of accidentally entering fishery farms increases when entering or leaving the port during night time or under poor visibility circumstances.

Loss Prevention Suggestions

- (1) Please note that the geographical scope of the fishery farm is changing constantly, and the coordinates of the fishery farm mentioned in this Circular is for reference only.
- (2) If there is a route recommended by the MSA, ships are advised to follow such recommended routes with great caution.
- (3) When sailing in the waters near the fishery farms, ships should use visual, hearing and any other available means to maintain a proper lookout, keep close contact with the vessel traffic service center and pilot station, and consider following their suggestions after confirming that the surrounding environment and target waters are safe.

- (4) Despite the above suggestions, we remind the Master that the resources and information provided by the vessel traffic service center, pilot station, agent, etc. might be inadequate, the Master has the responsibility and absolute right to decide whether to follow the suggestions provided according to his professional judgment.
- (5) It is suggested that the Master, after considering the information provided by the agent and this Circular, plot the geographical scope of the fishery farms on the electronic or paper chart for reference, and develop a comprehensive voyage plan, in order to prevent accidentally entering into the fishery farms.
- (6) Try to avoid entering and leaving the above-mentioned ports during night time or under restricted visibility circumstances as far as practicable in view of the shipping schedule, commercial considerations and other relevant conditions.
- (7) When ships enter or leave the above ports, prepare engine and both anchors in advance, adopt safe speed, take into due consideration of enhancing bridge manpower, posting additional lookouts on the bridge and forecastle.
- (8) In the event of an unfortunate accident relating to fishery farms, please report to the vessel traffic service center, the local agent and the ship management company in time and contact Huatai as soon as possible. Our timely intervention will be more conducive to fixing relevant favorable evidence and safeguarding the rights and interests of Owners.

Attachments: Distribution and Coordinates of Fishery Farms

1. Distribution of Fishery Farms along the Coast of Shandong Province

- 1.1. Fishery Farms off Laizhou Port
- 1.2. Fishery Farms off Yantai Port
- 1.3. Fishery Farms off Longkou Port
- 1.4. Fishery Farms off Penglai Port
- 1.5. Fishery Farms off Lanshan Port

2. Distribution of Fishery Farms along the Coast of Liaoning Province

- 2.1. Fishery Farms off Dalian Port

3. Distribution of Fishery Farms along the Coast of Fujian Province

- 3.1. Fishery Farms near Ningde
- 3.2. Fishery Farms near Nanri Island

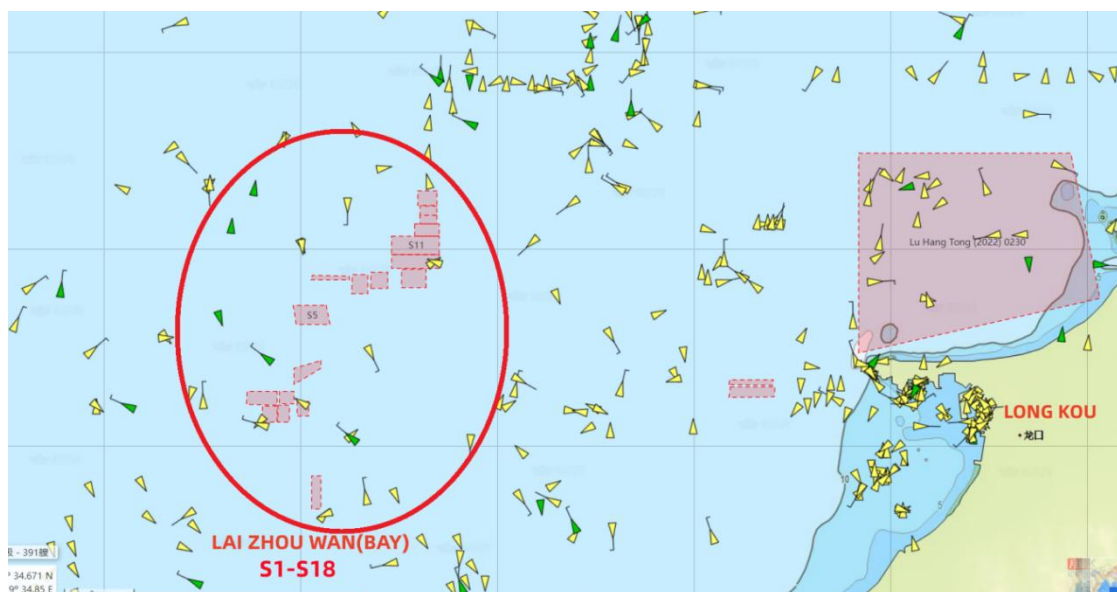
4. Distribution of Fishery Farms along the Coast of Hebei Province

- 4.1 Fishery Farms off Jingtang Port and Qinhuangdao Port
- 4.2 Fishery Farms off Huanghua Port

1. Distribution of Fishery Farms along the Coast of Shandong Province



1.1 Fishery Farms off Laizhou Port



Area S1:

1. 37°39.267'N 119°41.152'E
2. 37°39.266'N 119°40.350'E
3. 37°38.564'N 119°40.349'E
4. 37°38.565'N 119°41.158'E

Area S2:

1. 37°44.251'N 119°46.158'E
2. 37°44.263'N 119°47.076'E
3. 37°44.964'N 119°47.086'E
4. 37°44.962'N 119°46.152'E

Area S3:

1. 37°39.882'N 119°41.157'E
2. 37°39.880'N 119°39.543'E
3. 37°39.319'N 119°39.513'E
4. 37°39.300'N 119°41.131'E

Area S4:

1. 37°44.026'N 119°45.152'E
2. 37°44.029'N 119°45.993'E
3. 37°44.863'N 119°46.004'E
4. 37°44.858'N 119°45.165'E

Area S5:

1. 37°43.550'N 119°43.800'E
2. 37°42.730'N 119°44.000'E
3. 37°42.730'N 119°42.160'E
4. 37°43.545'N 119°42.000'E

Area S6:

1. 37°44.623'N 119°42.939'E
2. 37°44.629'N 119°45.003'E
3. 37°44.800'N 119°45.001'E
4. 37°44.810'N 119°43.041'E

Area S7:

1. 37°47.770'N 119° 49.700'E
2. 37°47.770'N 119° 48.800'E
3. 37°47.380'N 119° 48.800'E
4. 37°47.380'N 119° 49.700'E

Area S8:

1. 37°47.380'N 119°49.700'E
2. 37°47.020'N 119°49.700'E
3. 37°47.020'N 119°48.800'E
4. 37°47.380'N 119°48.800'E

Area S9:

1. 37°48.400'N 119°49.700'E
2. 37°48.400'N 119°48.700'E
3. 37°47.790'N 119°48.700'E
4. 37°47.790'N 119°49.700'E

Area S10:

1. 37°47.000'N 119°48.500'E
2. 37°47.000'N 119°49.850'E
3. 37°46.500'N 119°49.850'E
4. 37°46.500'N 119°48.500'E

Area S11:

1. 37°46.50'N 119°47.30'E
2. 37°46.50'N 119°49.85'E
3. 37°45.70'N 119°49.85'E
4. 37°45.70'N 119°47.30'E

Area S12:

1. 37°45.69'N 119°47.30'E
2. 37°45.69'N 119°49.85'E
3. 37°45.10'N 119°49.85'E
4. 37°45.10'N 119°47.30'E

Area S13:

1. 37°44.28'N 119°49.12'E
2. 37°45.08'N 119°49.12'E
3. 37°45.08'N 119°47.80'E
4. 37°44.28'N 119°47.80'E

Area S14:

1. 37°34.850'N 119°43.00'E
2. 37°36.265'N 119°43.00'E
3. 37°36.265'N 119°43.50'E
4. 37°34.850'N 119°43.50'E

Area S15:

1. 37°39.45'N 119°42.23'E
2. 37°38.84'N 119°42.23'E
3. 37°38.84'N 119°42.84'E
4. 37°39.45'N 119°42.84'E

Area S16:

1. 37°39.30'N 119°41.20'E
2. 37°38.56'N 119°41.20'E
3. 37°38.56'N 119°41.80'E
4. 37°39.30'N 119°41.80'E

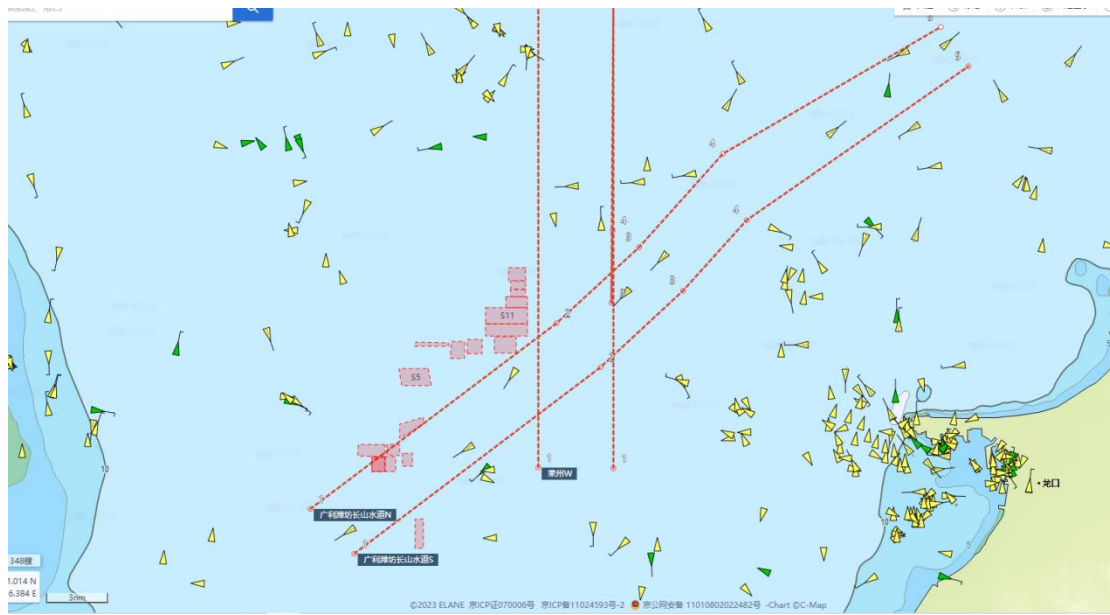
Area S17:

1. 37°41.18'N 119°43 48'E
2. 37°40.85'N 119°43 48'E
3. 37°40.18'N 119°42.05'E
4. 37°40.85'N 119°42.05'E

Area S18:

1. 37°39.88'N 119°41.26'E
2. 37°39.34'N 119°41.26'E
3. 37°39.34'N 119°42.06'E
4. 37°39.88'N 119°42.06'E

According to Huatai’s experience in the handling of such cases, there are multiple fishery farms in the waters of Laizhou Bay, including but not limited to the above-mentioned fishery farms, and some of them have even expanded to the recommended routes. West-bound ships sailing out of Changshan Channel to Weifang Port, or sailing from Penglai/Longkou/other northern Ports to Weifang Port, are exposed to high risks of entering the fishery farms off Laizhou. Ships are suggested to proceed along following recommended routes in order to avoid entering fishery farms.



Guangli Port, Weifang Port - Changshan Channel

Guangli Port, Weifang Port- Changshan Channel	North Boundary Line		South Boundary Line		Width (nm)	Course	Distance (nm)	Chart Depth (m)
	Longitude (E)	Latitude (N)	Longitude (E)	Latitude (N)				
Starting Point	119°36'38"	37°36'45"	119°39'20"	37°34'34"	3.0	53°/233°	16.5	12.2-17.6
Turning Point 1	119°51'37"	37°45'45"	119°54'19"	37°43'37"	3.0	47°/227°	5.4	
Turning Point 2	119°56'38"	37°49'25"	119°59'19"	37°47'18"	3.0	42°/222°	6.0	
Turning Point 3	120°01'45"	37°53'54"	120°03'10"	37°50'43"	3.0	56°/236°	12.5	
Ending point	120°15'02"	38°00'04"	120°16'40"	37°58'06"	2.0			

Laizhou Port West Channel

Laizhou Port West Channel	West Boundary Line		East Boundary Line		Width (nm)	Course	Distance (nm)	Chart Depth (m)
	Longitude (E)	Latitude (N)	Longitude (E)	Latitude (N)				
Starting Point	119°50'30"	37°38'45"	119°53'51"	37°38'45"	2.5	000°/180	23	14.0-18.2
Ending point	119°50'30"	38°01'49"	119°53'51"	38°01'55"				

Please Note:

- (1) The fishery farms in the above chart are just small parts of the fishery farms in that area which are obtained during our case handling, and most of them are not plotted on the chart due to limited information available.

- (2) It is noted that any claims for damage to fishery farms within the recommended channels are usually not upheld by the local authorities.

1.2 Fishery Farms off Yantai Port

In order to avoid fishery farm damage cases off Longkou Port, Yantai MSA has issued series of Navigation Notices regarding the information of fishery farms within their jurisdiction on their website, and the latest one is (Lu Hang Tong [2022] 0413).

QUOTE

Fishery farm range in the sea area south of Yantai - Weihai public Channel

Fishery farms are found within the sea area connected by the following four coordinates:

37°38.99'N /121°46.83'E,

37°39.35'N /121°55.17'E,

37°37.02'N/ 121°55.17'E,

37°36.75'N/ 121°46.83'E.

The distance between the north boundary of the fishery farm area and the south boundary of the channel is 200m, and the ships passing by should strengthen lookout and navigate cautiously to avoid entering those farms.

This Notice is only used as navigation safety information for passing ships.

UNQUOTE

Ships are suggested to proceed along following MSA recommended route in order to avoid entering fishery farms.

Yantai - Weihai	North Boundary		South Boundary		Width (nm)	Course	Distance (nm)	Chart depth (m)
	Longitude	latitude	Longitude	latitude				
Starting point	121°33'24"E	37°40'30"N	121°33'36"E	37°38'30"N	2	087°/267°	23	17.2-23
Ending point	121°59'42"E	37°41'36"N	122°06'36"E	37°40'00"N				

In addition, in order to give adequate warning to ships to avoid passing through the fishery farms, the MSA established 11 virtual AIS Marks on the above-mentioned channel from Yantai to Weihai. According to the MSA Navigation Warning (Lu Hang Jing 0367) published on Aug. 08, 2022:

QUOTE

YELLOW SEA, ELEVEN VIRTUAL AIS MARKS ESTABLISHED ON THE ROUTE FROM YANTAI TO WEIHAI.

YW ROUTE NO.1 (37-40.00N 122-06.60E) , MMSI 994126108.

YW ROUTE NO.2 (37-41.60N 121-59.70E) , MMSI 994126109.

YW ROUTE NO.3 (37-39.71N 121-59.85E) , MMSI 994126110.

YW ROUTE NO.4 (37-41.33N 121-53.12E) , MMSI 994126111.

YW ROUTE NO.5 (37-39.42N 121-53.31E) , MMSI 994126112.

YW ROUTE NO.6 (37-41.06N 121-46.55E) , MMSI 994126113.

YW ROUTE NO.7 (37-39.12N 121-46.74E) , MMSI 994126114.

YW ROUTE NO.8 (37-40.78N 121-39.97E) , MMSI 994126115.

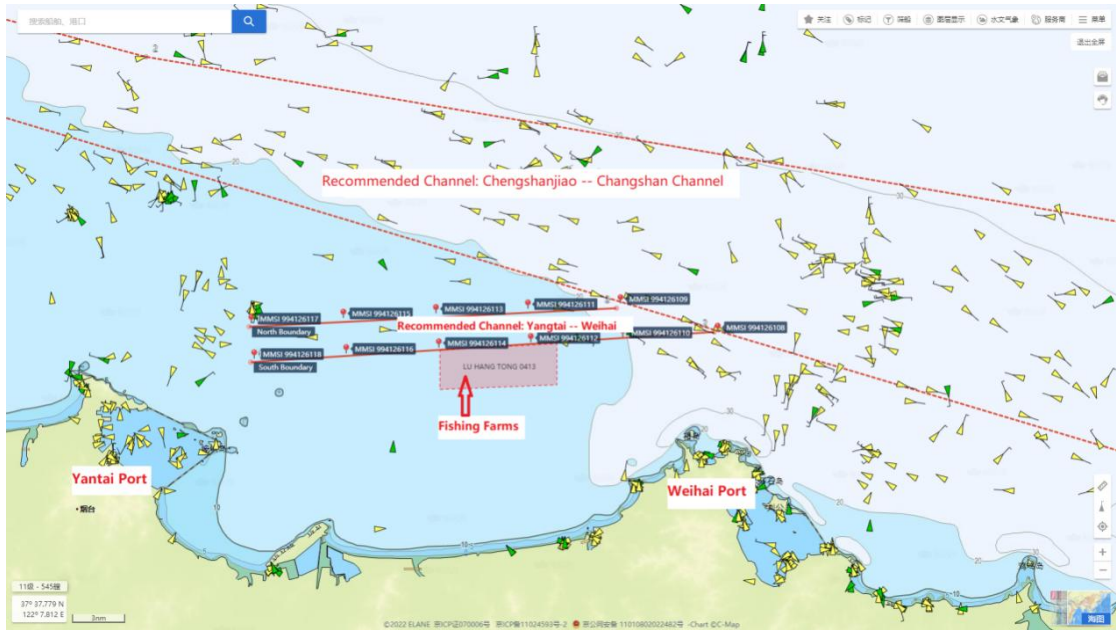
YW ROUTE NO.9 (37-38.81N 121-40.17E) , MMSI 994126116.

YW ROUTE NO.10 (37-40.50N 121-33.40E) , MMSI 994126117.

YW ROUTE NO.11 (37-38.50N 121-33.60E) , MMSI 994126118.

CAUTION ADVISED.

UNQUOTE



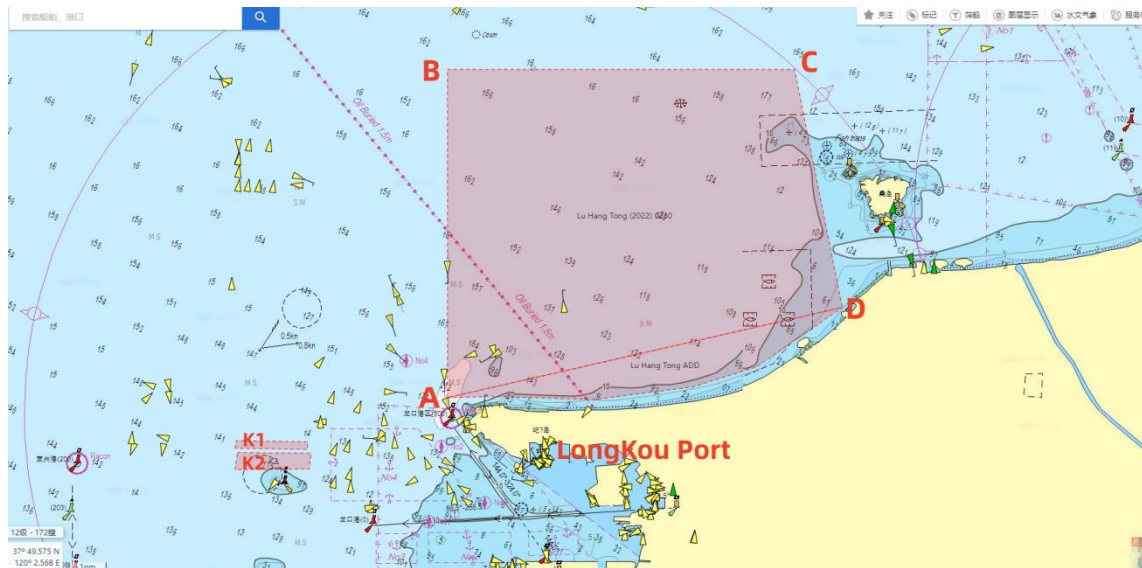
Lu Hang Tong [2022] 0413 and the MSA recommended channel

(with 11 virtual AIS mark)

Please Note:

There are some unidentified fishery farms that are not included in the above navigation notice. The duty officer should keep a sharp lookout during the navigation in that sea area.

1.3 Fishery Farms off Longkou Port



In order to avoid fishery farm damage cases off Longkou Port, the MSA issued a Navigation Notice (Lu Hang Tong [2022] 0230) on the information of fishery farms in the sea area enclosed by the following four coordinates and the coastline:

- A: 37°41'30"N, 120°12'20"E;
- B: 37°50'00"N, 120°12'20"E;
- C: 37°50'00"N, 120°23'42"E;
- D: 37°43'50"N, 120°25'16"E。

In the Navigation Notice, the MSA points out the following precautions:

- (1) The Fishery farms boundary changes with seasons, and ships passing by should strengthen lookout and navigate cautiously to avoid passing through those farms.
- (2) This Notice is only used as navigation safety information for passing ships.

However, there are still some unidentified fishery farms that are not included in the above navigation notice (such as K1 and K2 two unlicensed fishery farms).

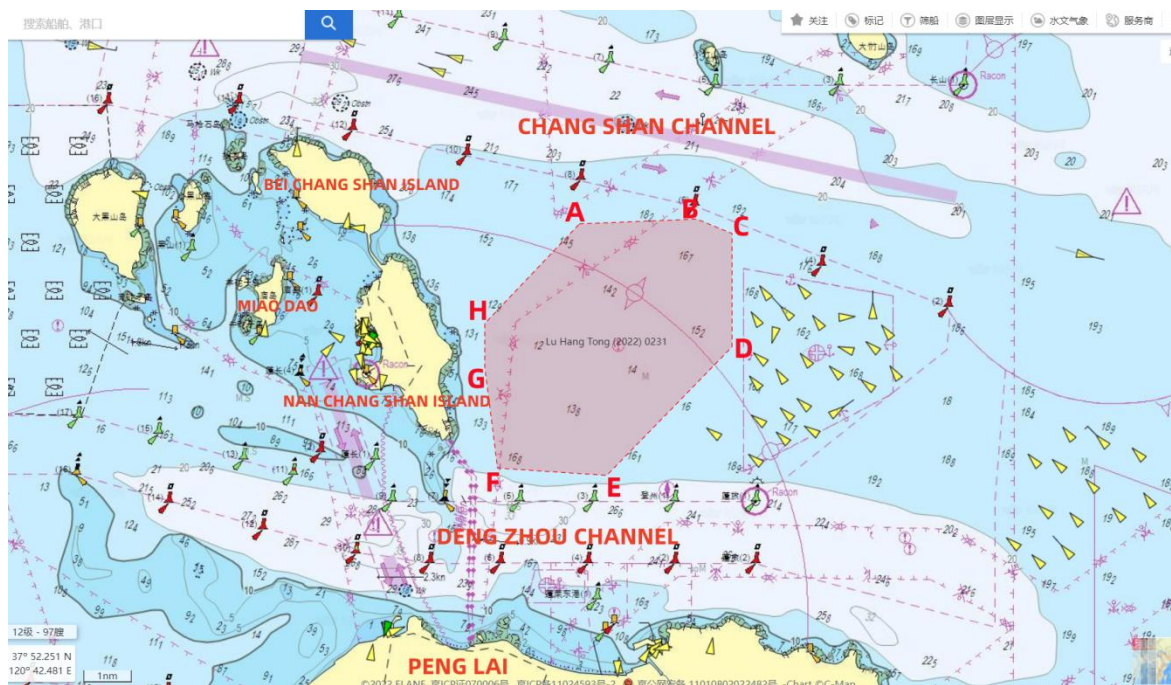
K1

1. 37° 40.183'N 120° 05.3641'E
2. 37° 40.3809'N 120° 05.4012'E
3. 37° 40.3510'N 120° 07.7620'E
4. 37° 40.1509'N 120° 07.7339'E

K2

1. 37° 40.076'N 120° 05.460'E
2. 37° 40.057'N 120° 07.860'E
3. 37° 39.646'N 120° 07.801'E
4. 37° 39.629'N 120° 05.365'E

1.4 Fishery Farms off Penglai Port



In order to avoid fishery farm damage cases off Penglai Port, the MSA issued a Navigation Notice on the information of fishery farms in the sea area enclosed by the following coordinates:

A: 37°57'54"N, 120°48'48"E

B: 37°58'00"N, 120°51'48"E

C: 37°57'42"N, 120°52'42"E

D: 37°55'24"N, 120°52'42"E

E: 37°52'48"N, 120°49'30"E

F: 37°52'56"N, 120°46'42"E

G: 37°55'00"N, 120°46'22"E

H: 37°55'53"N, 120°46'22"E

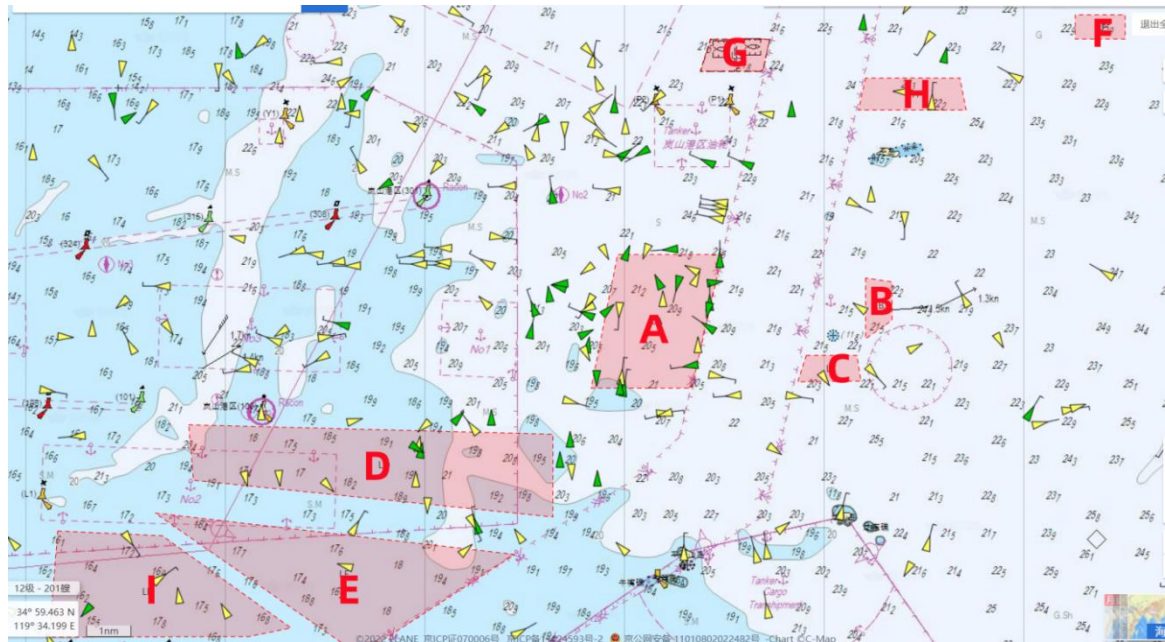
In the Navigation Notice, the MSA points out the following precautions:

- (1) The Fishery farms boundary changes with seasons, and the ships passing by should strengthen lookout and navigate cautiously to avoid passing through those farms.
- (2) This Notice is only used as navigation safety information for passing ships.

Please Note:

There are some unidentified fishery farms that are not included in the above navigation notice. The duty officer should keep a sharp lookout during the navigation in that sea area.

1.5 Fishery Farms off Lanshan Port



The geographical scope of the fishery farm off Lanshan Port is as follows:

Area A:

35°06'12.00"N, 119°50'16.00"E
35°03'18.00"N, 119°49'28.00"E
35°03'18.00"N, 119°46'48.00"E
35°06'12.00"N, 119°47'30.00"E

Area B:

35°05'41.18"N, 119°54'03.73"E
35°04'21.77"N, 119°54'03.82"E
35°04'46.97"N, 119°54'45.81"E
35°05'35.97"N, 119°54'45.75"E

Area C:

35°04'01.06"N, 119°52'29.91"E
35°03'26.77"N, 119°52'15.68"E
35°03'26.87"N, 119°53'56.63"E
35°04'01.14"N, 119°53'49.95"E

Area D:

35°02' 30.00'' N, 119°36' 11.0''E
35°02' 18.00'' N, 119°45' 48.0''E
35°00'30.00''N, 119°45'48.00''E
35°01'18.00''N, 119°36'18.00''E

Area E:

35°00'36.00''N, 119°35'18.00''E
34°59'42.00''N, 119°44'48.00''E
34°57'30.00''N, 119°40'42.00''E

Area F:

35°11'23.43''N, 119°59'36.03''E
35°10'52.35''N, 119°59'36.03''E
35°10'52.34''N, 120°00'54.73''E
35°11'23.43''N, 120°00'54.74''E

Area G:

35°10' 52.40'' N, 119°49' 58.07''E
35°10' 10.63'' N, 119°49'42.15''E
35°10' 10.75'' N, 119°51'20.11''E
35°10' 52.34'' N, 119°51'32.20''E

Area H:

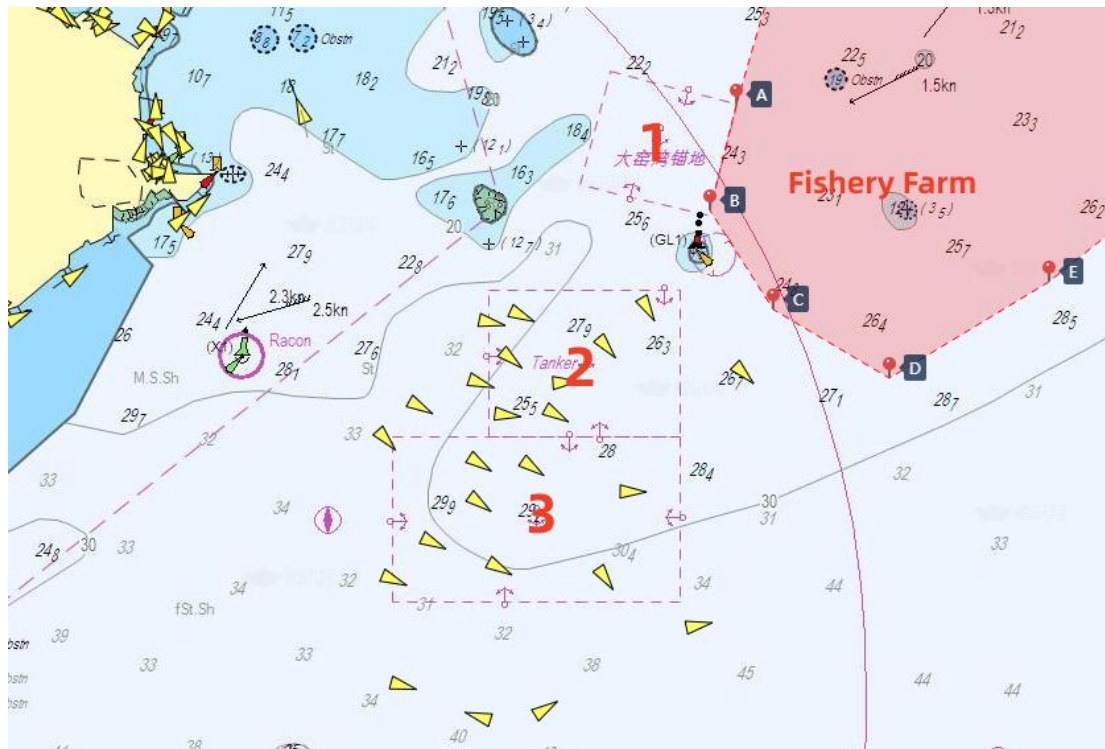
35-10'01.66''N, 119-54'03.38''E
35-09'19.73''N, 119-53'52.84''E
35-09'19.65''N, 119-56'42.48''E
35-10'01.58''N, 119-56'32.59''E

Area I:

35°00.21' N, 119°32.72' E
35°00.10' N, 119°35.48' E
34°58.10' N, 119°38.87' E
34°57.91' N, 119°37.79' E
34°57.89' N, 119°32.50' E

2. Distribution of Fishery Farms along the Coast of Liaoning Province

2.1 Fishery Farms off Dalian Port



We have marked the three anchorages of Dalian Xingang as 1, 2, and 3 respectively with the following explanation, and the approximate location of the fishery farms are also indicated in the above figure.

- (1) Dayaowan Anchorage: It has almost been abandoned, and usually no ships anchor at this anchorage.
- (2) Tanker anchorage: Arriving oil tankers normally anchor at this anchorage in accordance with the instructions of Dalian VTS.
- (3) Cargo Ship Anchorage: Ships other than oil tankers normally anchor at this anchorage in accordance with VTS instructions.

Fishery farms off Dalian Port mainly concentrated in the northeast of the Dayaowan and Tanker anchorage. Due to its close proximity to the anchorage, cases of ships accidentally entering the fishery farm occur from time to time. In recent years, the area of the fishery farms has been continuously expanding, and the specific areas have also been changing constantly, thus the boundary of the fishery farms mentioned in this Circular is for reference only. Considering that it is normal for ships on international voyage entering the anchorage from the south side, those ships are safe as long as they do not cross the lines joining by the following coordinates to the north.

A 38°59.063'N, 122°02.923'E

B 38°57.775'N, 122°02.518'E

C 38°56.569'N, 122°03.503'E

D 38°55.731'N, 122°05.321'E

E 38°56.903'N, 122°07.820'E

3. Distribution of Fishery Farms along the Coast of Fujian Province



3.1 Fishery Farms near Ningde



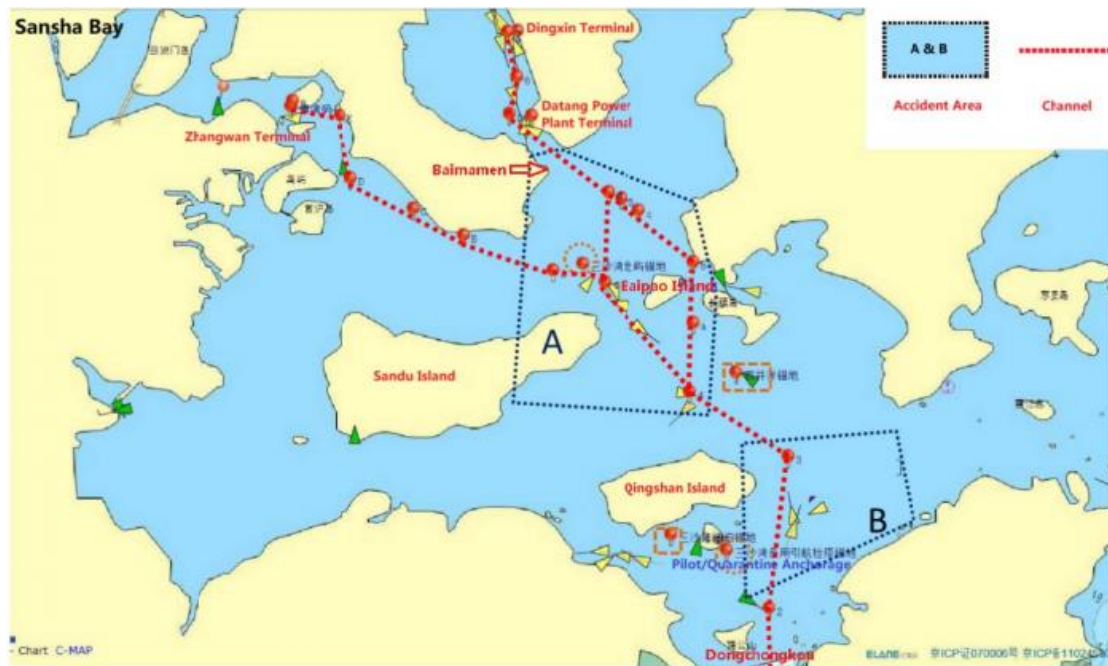
The geographical scope of the fishery farms:

A26-44.55'N, 119-38.05'E

B26-45.85'N, 119-47.32'E

C26-35.50'N, 119-50.07'E

The red dashed line in the above picture represents the buoyed channels. There are dense fishery farms distributed near the channel of Sansha Bay (marked by yellow dashed lines in the picture), and some of them are even distributed within the buoyed channels.



According to Huatai's experience in the handling of such cases in the Sansha Bay, ships accidentally entering the fishery farm mainly occurred in two areas.

Area A: the channel near Baipao Island

and Area B: the east channel of Qingshan Island (as shown in the above figure).

Several reasons that might attribute to occurrence of the cases of ship accidentally entering fishery farms:

- (1) Currents in the above two channels are extremely strong, with a velocity of 3-5 knots. The rudder effect is poor when ships sail with the current.
- (2) The navigable width of the channel is very narrow, whereas the turning angle is large, making it extremely difficult for ship manoeuvring.
- (3) A large number of fishing boats navigate within or cross the channel, as a result, the available room for avoiding collision or entering fishery farms is limited.
- (4) Dense fishery farms are distributed around and even within the channel. Ships are

prone to enter the fishery farm, if they fail to return to the main channel in a timely manner after giving way to other ships.

3.2 Fishery Farms near Nanri Island



(1) Fishery farms exist in the sea area enclosed by the joining lines of the 1-5 coordinates listed in below table and the coastline of Nanri Island (A)

No.	Latitude	Longitude
1	25°10'11.40"N	119°33'21.49"E
2	25°08'21.21"N	119°32'38.23"E
3	25°08'29.60"N	119°30'00.45"E
4	25°12'02.13"N	119°25'31.21"E
5	25°14'20.22"N	119°26'12.61"E

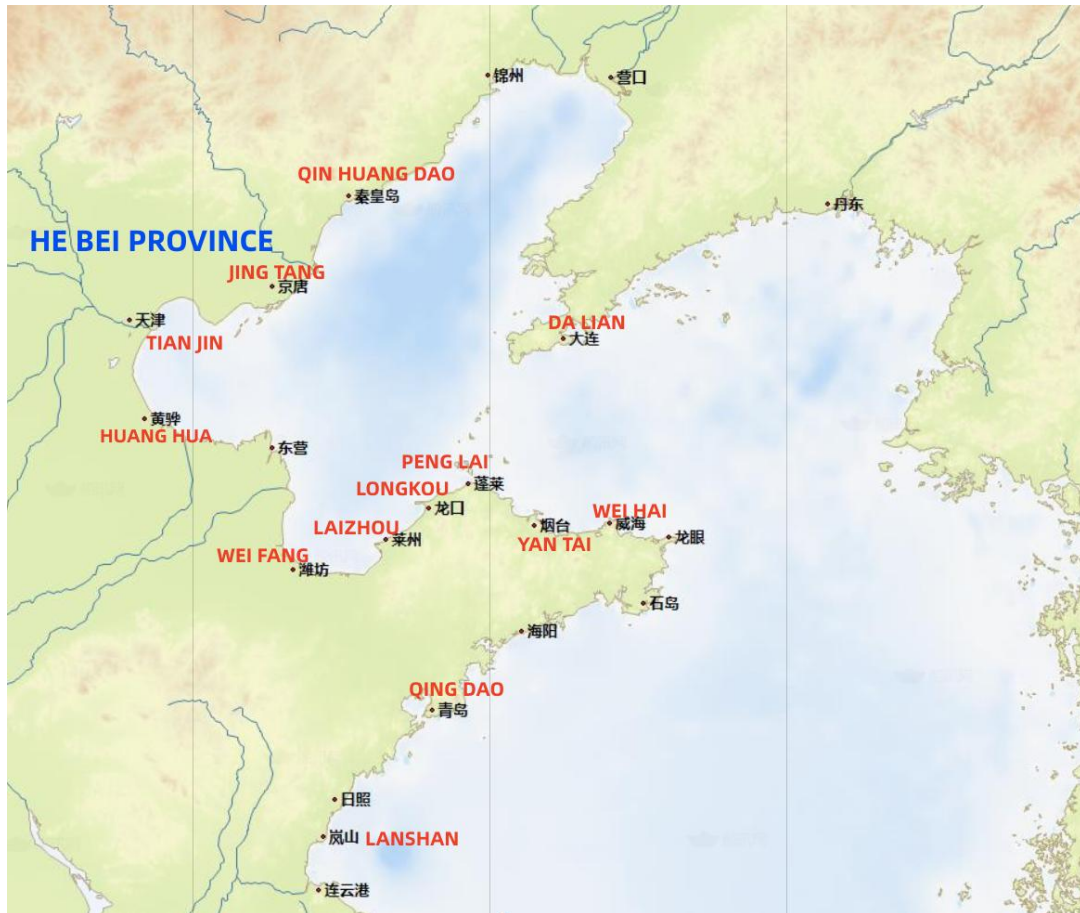
- (2) Fishery farms exist in the sea area enclosed by the joining lines of the 6-12 coordinates listed in below table (B)

No.	Latitude	Longitude
6	25°14'46.49"N	119°27'18.73"E
7	25°15'05.50"N	119°26'41.66"E
8	25°15'54.12"N	119°27'05.14"E
9	25°16'04.18"N	119°27'46.54"E
10	25°15'40.15"N	119°28'04.47"E
11	25°15'55.24"N	119°30'38.34"E
12	25°16'40.51"N	119°30'01.26"E

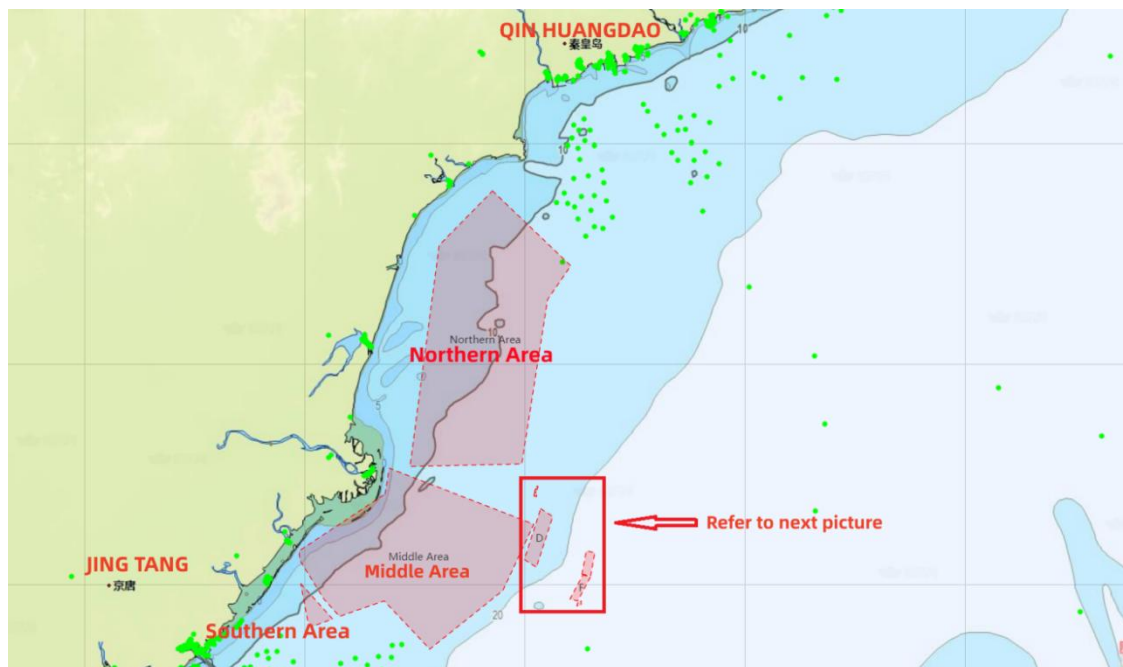
- (3) Fishery farms exist in the sea area enclosed by the joining lines of the 13-16 coordinates listed in below table (C)

No.	Latitude	Longitude
13	25°17'19.62"N	119°28'32.27"E
14	25°16'47.21"N	119°28'44.02"E
15	25°16'30.45"N	119°27'49.02"E
16	25°17'06.21"N	119°27'46.54"E

4. Distribution of Fishery Farms along the Coast of Hebei Province



4.1 Fishery Farms off Jingtang Port and Qinhuangdao Port





B

The geographical scope of the above-mentioned fishery farms (A)

The Northern Area:

39°46.206'N, 119°28.744'E

39°40.711'N, 119°36.201'E

39°38.203'N, 119°34.038'E

39°26.017'N, 119°31.535'E

39°25.809'N, 119°20.844'E

39°42.199'N, 119°23.656'E

The Middle Area:

39°23.764'N, 119°18.403'E

39°25.713'N, 119°18.897'E

39°21.526'N, 119°32.678'E

39°16.629'N, 119°29.753'E

39°12.272'N, 119°22.749'E

39°15.829'N, 119°18.321'E

39°14.676'N, 119°14.098'E

39°15.965'N, 119°12.594'E

39°18.878'N, 119°10.277'E

39°19.582'N, 119°10.184'E

The Southern Area:

39°17.134'N, 119°10.338'E

39°14.491'N, 119°13.459'E

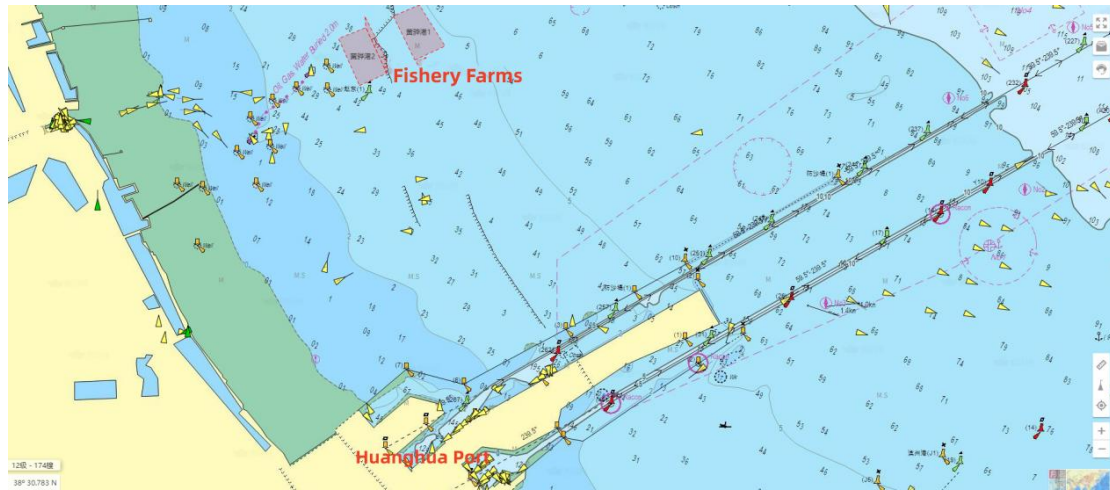
39°13.931'N, 119°11.451'E

39°14.371'N, 119°10.998'E

Scattered fishery farms outside the above-mentioned areas (B)

No.	Geographical scope	
A	39°23.656'N, 119°32.686'E	39°23.612'N, 119°32.908'E
	39°23.885'N, 119°32.996'E	39°23.923'N, 119°32.781'E
B	39°23.944'N, 119°32.812'E	39°24.145'N, 119°32.877'E
	39°24.122'N, 119°33.040'E	39°23.907'N, 119°32.983'E
C	39°24.142'N, 119°33.050'E	39°24.351'N, 119°33.148'E
	39°24.382'N, 119°32.936'E	39°24.165'N, 119°32.846'E
D	39°22.697'N, 119°33.341'E	39°22.121'N, 119°34.477'E
	39°18.345'N, 119°32.925'E	39°18.921'N, 119°31.821'E
E	39°15.734'N, 119°36.891'E	39°15.463'N, 119°36.825'E
	39°15.498'N, 119°37.192'E	39°15.863'N, 119°37.239'E
F	39°17.774'N, 119°37.421'E	39°17.666'N, 119°38.142'E
	39°15.861'N, 119°36.901'E	39°15.973'N, 119°36.160'E
G	39°17.842'N, 119°37.287'E	39°19.570'N, 119°37.725'E
	39°19.430'N, 119°38.580'E	39°17.714'N, 119°38.137'E

4.2 Fishery Farms off Huanghua Port



The Huanghua MSA has announced the geographical location of the following 3 fishery farms

Area 1:

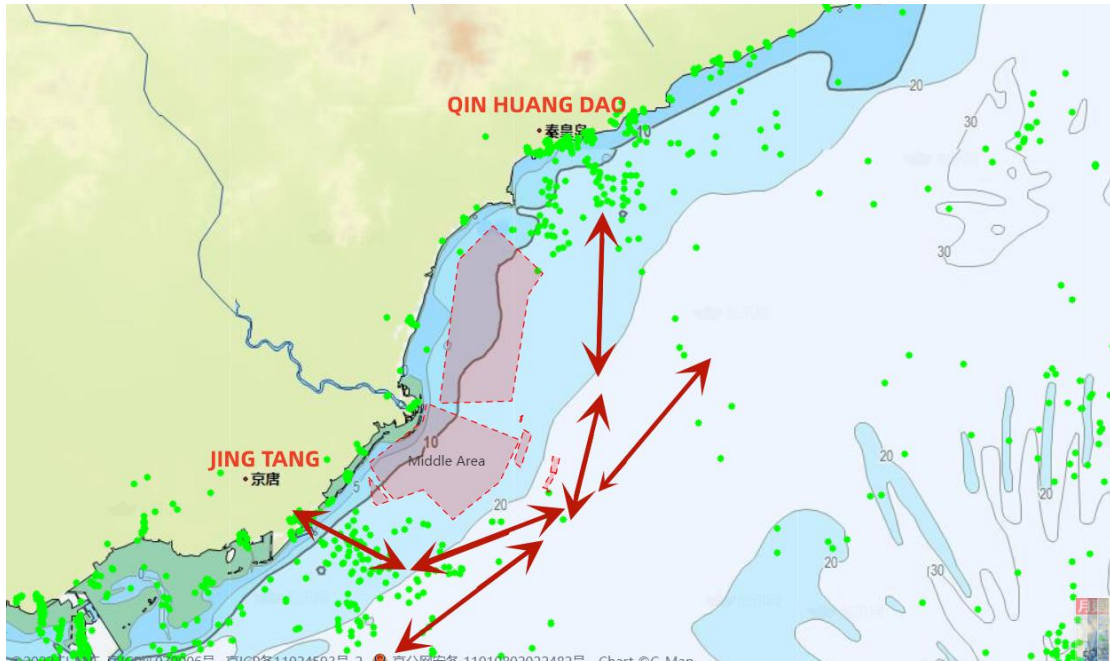
- A. $38^{\circ}30' 58.785''\text{N}$, $117^{\circ}50' 09.520''\text{E}$
- B. $38^{\circ}31'22.311''\text{N}$, $117^{\circ}51' 13.607''\text{E}$
- C. $38^{\circ}32'31.321''\text{N}$, $117^{\circ}50' 19.209''\text{E}$
- D. $38^{\circ}32'12.661''\text{N}$, $117^{\circ}49' 23.219''\text{E}$

Area 2:

- A. $38^{\circ}30' 15.713''\text{N}$, $117^{\circ}48' 12.299''\text{E}$
- B. $38^{\circ}30'36.743''\text{N}$, $117^{\circ}49' 09.518''\text{E}$
- C. $38^{\circ}31'53.501''\text{N}$, $117^{\circ}48' 25.760''\text{E}$
- D. $38^{\circ}31'34.229''\text{N}$, $117^{\circ}47' 27.998''\text{E}$

Area 3:

- A. $38^{\circ}30' 36.743''\text{N}$, $117^{\circ}49' 09.518''\text{E}$
- B. $38^{\circ}30'58.785''\text{N}$, $117^{\circ}49' 09.520''\text{E}$
- C. $38^{\circ}32'12.661''\text{N}$, $117^{\circ}48' 23.219''\text{E}$
- D. $38^{\circ}31'53.501''\text{N}$, $117^{\circ}48' 25.760''\text{E}$



According to Huatai’s experience in the handling of such cases in recent years, most of the fishery farms along the coast of Hebei Province are located between Jingtang and Qinhuangdao Port, as well as in the waters near Huanghua Port. Ships navigating between Jingtang/Tianjin/Huanghua Port and Qinhuangdao/Jinzhou Port are suggested to plan their routes away from the coast to avoid accidentally entering the fishery farms.

Should you have any inquiry, please feel free to contact Huatai Beijing (pni.bj@huatai-serv.com) or our local branch offices.

Best regards,

CUI Jiyu

Head of Marine Team



www.huataimarine.com

pni.bj@huatai-serv.com

Duty Phone: +86 13701125026

Circular Ref. No.: PNI [2023]04

日期: 2023年5月23日



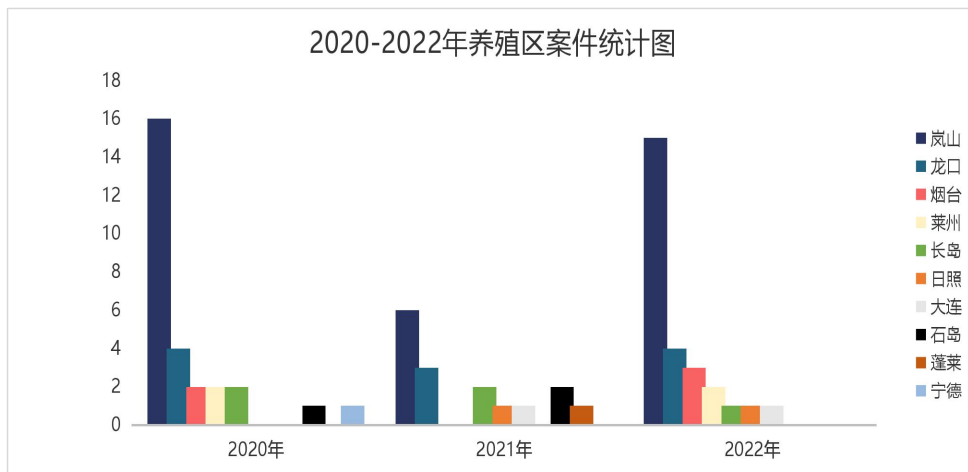
中国沿海主要海上养殖区分布情况介绍

2022年中国沿海养殖区案件数量回升，受到协会及其会员的高度关注。应协会要求，我们再次更新中国沿海养殖区案件分布情况、特点及养殖区坐标，并提供防损建议，供协会及其会员参考。

本通函将替代华泰之前发布的所有关于养殖区的通函（PNI1508、PNI1706、PNI1813、PNI1903、PNI1906、PNI[2021]10、PNI[2021]13、PNI[2022]09）。对于中国沿海海上养殖区的介绍，协会/船东只需参考本通函内容。

养殖区案件数量及分布（2020-2022）

下图为华泰最近三年（2020年-2022年）处理的船舶误入海上养殖区案件的港口分布情况。



上图中除大连和宁德外，其他港口均属于山东省。岚山港仍是案件数量最多的港口，2021年案件数量下降至6件，但2022年又回升至15件。

岚山港养殖区案件高发的原因

我们认为岚山港此类案件高发可能与以下因素有关：

- (1) 相对于其它港口，岚山港外海上养殖区数量更多、分布范围更广。
- (2) 养殖区位于日照港，岚山港及连云港三个港口的交界处，商渔船通航环境复杂，商船避让他船及海上养殖区的可操纵水域受到较大限制。

- (3) 船舶没有根据华泰关于海上养殖区分布的通函及代理提供的信息在海图上标注养殖区范围以便做出合理的航行计划避开此区域。
- (4) 船员对此海域存在大量海上养殖区及渔船的事实缺乏心理上的戒备，当紧急情况发生时没有采取及时的合理的措施避免事故发生。
- (5) 夜间或者能见度不良时进出港口增加了误入养殖区的风险。

防损建议

- (1) 请注意养殖区范围是在不断变化之中，本通函中提及的养殖区坐标仅供参考。
- (2) 如存在海事局推荐的航路，建议船舶尽量沿此类推荐路线谨慎航行。
- (3) 船舶航行在养殖区附近水域时，应采用视觉、听觉和任何其他一切可利用的手段以保持正规瞭望，与船舶交通管理中心、引航站保持密切沟通，在确认周边环境和目标水域安全后，可以考虑遵循他们的建议。
- (4) 尽管有上条建议，我们还是提醒船长：船舶交通管理中心、引航站、代理等提供的资源和信息可能是不充分的，船长有责任也有绝对权力根据自己的专业判断去决定是否遵循所提供的建议。
- (5) 建议船长在考虑代理提供的信息及本通函后，在电子海图或纸质海图上标注养殖区的地理范围以供参考，制定详尽的航行计划，防止误入养殖区。

- (6) 从船期、商业方面考虑以及其他相关条件允许及可行的情况下，尽量避免在夜间或能见度受限的条件下进出上述港口。
- (7) 当船舶在进出以上港口时，及早备车、备双锚、采用安全航速，考虑增加驾驶台的值班人力，驾驶台和艏楼安排额外瞭望人员。
- (8) 如果不幸发生了误入养殖区的事故，请及时报告船舶交通管理中心、当地代理和船舶管理公司，并尽早联系华泰，我们的及时介入处理会更有利于固定相关有利证据，有助于维护船东权益。

附：养殖区分布情况及坐标

1. 山东省沿海养殖区分布情况

- 1.1 莱州港附近养殖区
- 1.2 烟台港附近养殖区
- 1.3 龙口港附近养殖区
- 1.4 蓬莱港附近养殖区
- 1.5 岚山港附近养殖区

2. 辽宁省沿海养殖区分布情况

- 2.1 大连港附近养殖区

3. 福建省沿海养殖区分布情况

3.1 宁德附近养殖区

3.2 南日岛附近养殖区

4. 河北省沿海养殖区分布情况

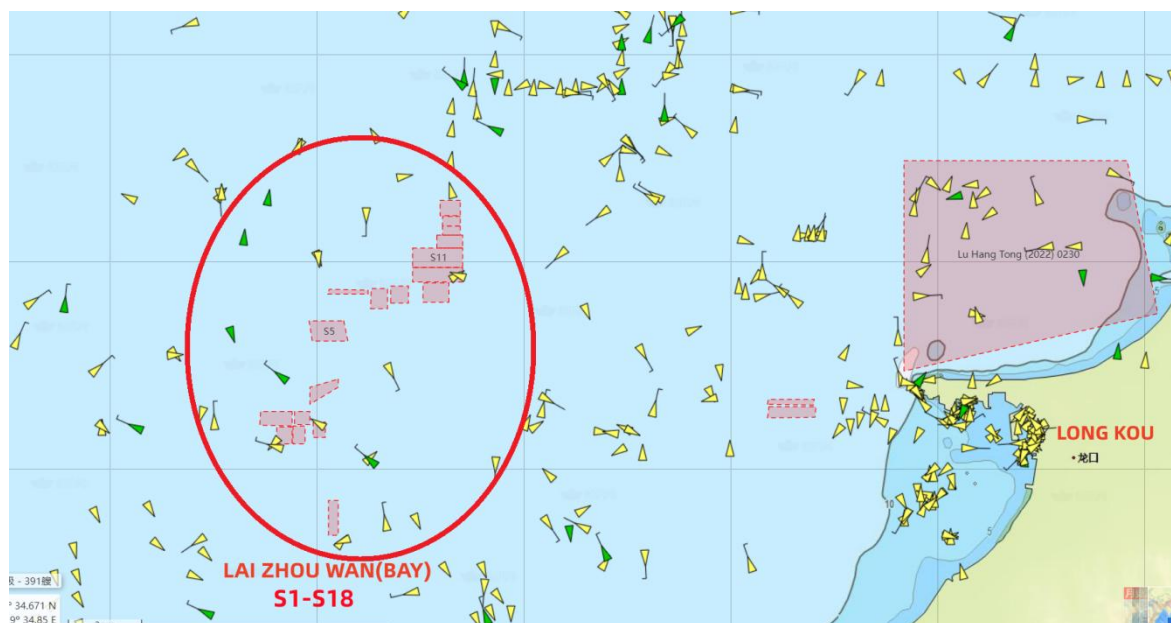
4.1 京唐港和秦皇岛港附近养殖区

4.2 黄骅港附近养殖区

1. 山东省沿海海上养殖区分布情况



1.1 莱州港附近养殖区



区域 S1:

1. 37°39.267'N 119°41.152'E
2. 37°39.266'N 119°40.350'E
3. 37°38.564'N 119°40.349'E
4. 37°38.565'N 119°41.158'E

区域 S2:

1. 37°44.251'N 119°46.158'E
2. 37°44.263'N 119°47.076'E
3. 37°44.964'N 119°47.086'E
4. 37°44.962'N 119°46.152'E

区域 S3:

1. 37°39.882'N 119°41.157'E
2. 37°39.880'N 119°39.543'E
3. 37°39.319'N 119°39.513'E
4. 37°39.300'N 119°41.131'E

区域 S4:

1. 37°44.026'N 119°45.152'E
2. 37°44.029'N 119°45.993'E
3. 37°44.863'N 119°46.004'E
4. 37°44.858'N 119°45.165'E

区域 S5:

1. 37°43.550'N 119°43.800'E
2. 37°42.730'N 119°44.000'E
3. 37°42.730'N 119°42.160'E
4. 37°43.545'N 119°42.000'E

区域 S6:

1. 37°44.623'N 119°42.939'E
2. 37°44.629'N 119°45.003'E
3. 37°44.800'N 119°45.001'E
4. 37°44.810'N 119°43.041'E

区域 S7:

1. 37°47.770'N 119° 49.700'E
2. 37°47.770'N 119° 48.800'E
3. 37°47.380'N 119° 48.800'E
4. 37°47.380'N 119° 49.700'E

区域 S8:

1. 37°47.380'N 119°49.700'E
2. 37°47.020'N 119°49.700'E
3. 37°47.020'N 119°48.800'E
4. 37°47.380'N 119°48.800'E

区域 S9:

1. 37°48.400'N 119°49.700'E
2. 37°48.400'N 119°48.700'E
3. 37°47.790'N 119°48.700'E
4. 37°47.790'N 119°49.700'E

区域 S10:

1. 37°47.000'N 119°48.500'E
2. 37°47.000'N 119°49.850'E
3. 37°46.500'N 119°49.850'E
4. 37°46.500'N 119°48.500'E

区域 S11:

1. 37°46.50'N 119°47.30'E
2. 37°46.50'N 119°49.85'E
3. 37°45.70'N 119°49.85'E
4. 37°45.70'N 119°47.30'E

区域 S12:

1. 37°45.69'N 119°47.30'E
2. 37°45.69'N 119°49.85'E
3. 37°45.10'N 119°49.85'E
4. 37°45.10'N 119°47.30'E

区域 S13:

1. 37°44.28'N 119°49.12'E
2. 37°45.08'N 119°49.12'E
3. 37°45.08'N 119°47.80'E
4. 37°44.28'N 119°47.80'E

区域 S14:

1. 37°34.850'N 119°43.00'E
2. 37°36.265'N 119°43.00'E
3. 37°36.265'N 119°43.50'E
4. 37°34.850'N 119°43.50'E

区域 S15:

1. 37°39.45'N 119°42.23'E
2. 37°38.84'N 119°42.23'E
3. 37°38.84'N 119°42.84'E
4. 37°39.45'N 119°42.84'E

区域 S16:

1. 37°39.30'N 119°41.20'E
2. 37°38.56'N 119°41.20'E
3. 37°38.56'N 119°41.80'E
4. 37°39.30'N 119°41.80'E

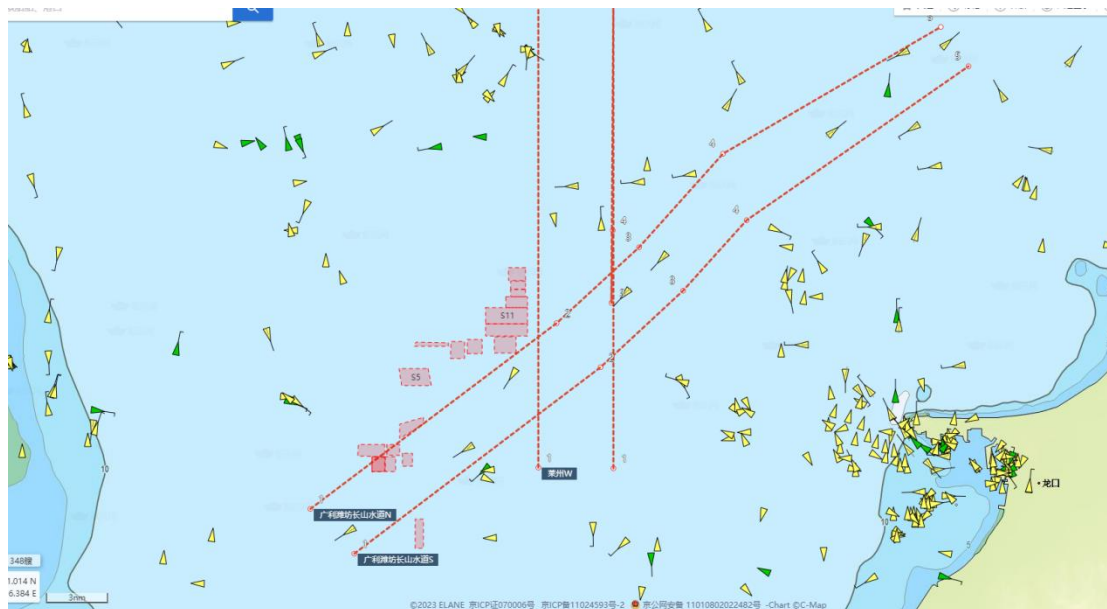
区域 S17:

1. 37°41.18'N 119°43 48'E
2. 37°40.85'N 119°43 48'E
3. 37°40.18'N 119°42.05'E
4. 37°40.85'N 119°42.05'E

区域 S18:

1. 37°39.88'N 119°41.26'E
2. 37°39.34'N 119°41.26'E
3. 37°39.34'N 119°42.06'E
4. 37°39.88'N 119°42.06'E

根据华泰案件处理经验, 在莱州湾海域存在包括但不限于以上提及的多个海上养殖区, 一些养殖区甚至扩张到推荐航路中。从长山水道驶出向潍坊港西行的船舶, 或从蓬莱、龙口、其他北方港口驶往潍坊港的船舶进入莱州附近养殖区的风险很高。建议船舶应按照以下推荐航路航行避免进入养殖区。



广利港、潍坊港口-长山水道

广利港, 潍坊港 - 长山水道	北边界线		南边界线		宽度 (nm)	航向	航程 (nm)	海图水深 (m)
	经度 (E)	纬度 (N)	经度 (E)	纬度 (N)				
起点	119°36'38"	37°36'45"	119°39'20"	37°34'34"	3.0	53°/233°	16.5	12.2-17.6
转向点 1	119°51'37"	37°45'45"	119°54'19"	37°43'37"	3.0	47°/227°	5.4	
转向点 2	119°56'38"	37°49'25"	119°59'19"	37°47'18"	3.0	42°/222°	6.0	
转向点 3	120°01'45"	37°53'54"	120°03'10"	37°50'43"	3.0	56°/236°	12.5	
终点	120°15'02"	38°00'04"	120°16'40"	37°58'06"	2.0			

莱州港西航路

莱州港西航路	西边界线		东边界线		宽度 (nm)	航向	航程 (nm)	海图水深 (m)
	经度 (E)	纬度 (N)	经度 (E)	纬度 (N)				
起点	119°50'30"	37°38'45"	119°53'51"	37°38'45"	2.5	000°/180	23	14.0-18.2
终点	119°50'30"	38°01'49"	119°53'51"	38°01'55"				

请注意：

- (1) 以上海图展示的养殖区是根据华泰在案件处理中获取的，仅为莱州附近养殖区的一小部分。因信息有限，大部分养殖区并未在海图上标绘。
- (2) 值得提及的是，推荐航路内的养殖区损害赔偿通常不会得到当地机关的支持。

1.2 烟台港附近养殖区

为防止烟台附近的养殖区损害案件的发生，烟台海事局在官网上发布了一系列涉及所辖水域内养殖区的航行通告，其中最新的一份是鲁航通[2022]0413。

烟台至威海公共航路南侧海域海产养殖范围以下 4 点连线海域内存在海产养殖：

37°38.99'N/121°46.83'E,

37°39.35'N/121°55.17'E,

37°37.02'N/121°55.17'E,

37°36.75'N/121°46.83'E.

养殖北边界与航路南边界距离 200 米，过往船舶应加强了望，谨慎驾驶，注意避让。

本通告仅作为过往船舶的通航安全信息。

建议船舶按照以下海事局推荐航路航行避免进入养殖区。

烟台-威海	北边界线		南边界线		宽度 (nm)	航向	航程 (nm)	海图水深 (m)
	经度 (E)	纬度 (N)	经度 (E)	纬度 (N)				
起点	121°33'24"E	37°40'30"N	121°33'36"E	37°38'30"N	2	087°/267°	23	17.2-23
终点	121°59'42"E	37°41'36"N	122°06'36"E	37°40'00"N				

除此之外，为防止船舶误入养殖区，海事局在上述烟台-威海航道上设立了 11 座 AIS 虚拟航标。根据海事局于 2022 年 8 月 8 日发布的鲁航警 0367:

黄海，烟台至威海航路新设 11 座虚拟 AIS 航标。

1 号虚拟 AIS 航标 (37-40.00N 122-06.60E)，MMSI 994126108。

2 号虚拟 AIS 航标 (37-41.60N 121-59.70E)，MMSI 994126109。

3 号虚拟 AIS 航标 (37-39.71N 121-59.85E), MMSI 994126110。

4 号虚拟 AIS 航标 (37-41.33N 121-53.12E), MMSI 994126111。

5 号虚拟 AIS 航标 (37-39.42N 121-53.31E), MMSI 994126112。

6 号虚拟 AIS 航标 (37-41.06N 121-46.55E), MMSI 994126113。

7 号虚拟 AIS 航标 (37-39.12N 121-46.74E), MMSI 994126114。

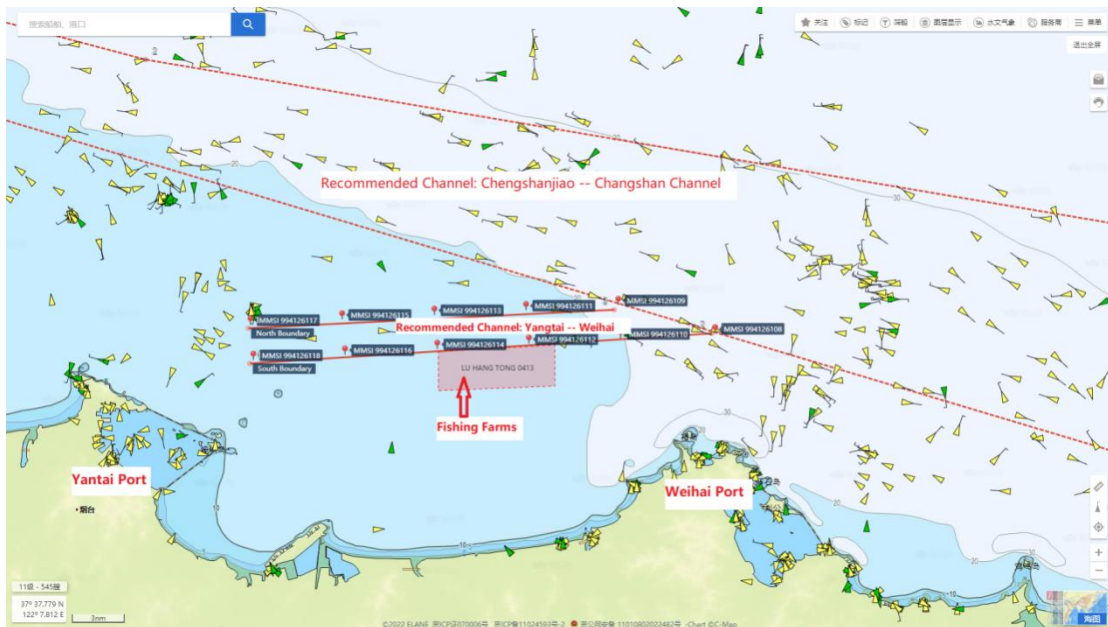
8 号虚拟 AIS 航标 (37-40.78N 121-39.97E), MMSI 994126115。

9 号虚拟 AIS 航标 (37-38.81N 121-40.17E), MMSI 994126116。

10 号虚拟 AIS 航标 (37-40.50N 121-33.40E), MMSI 994126117。

11 号虚拟 AIS 航标 (37-38.50N 121-33.60E), MMSI 994126118。

请过往船舶注意

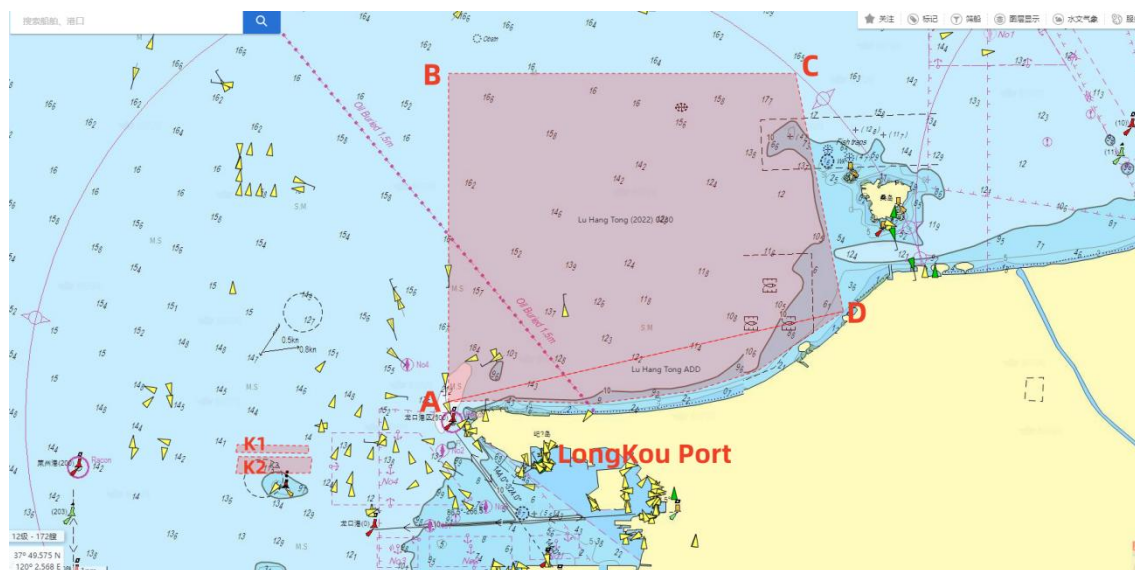


鲁航通[2022]0413 和海事局推荐航路 (包括 11 座 AIS 虚拟航标)

请注意：

仍有一些无法识别的养殖区并未包含在上述航行通告中，在上述海域航行时值班船员应始终保持谨慎瞭望。

1.3 龙口港附近养殖区



为防止龙口附近的养殖区损害案件的发生，海事局发布了鲁航通[2022]0230号航行通告，该通告中养殖区的范围由以下四个坐标点和海岸线所围成。

A: 37°41'30"N, 120°12'20"E;

B: 37°50'00"N, 120°12'20"E;

C: 37°50'00"N, 120°23'42"E;

D: 37°43'50"N, 120°25'16"E。

在该航行通告中，海事局特别提示：

(1) 养殖区边界随季节变化，过往船舶应加强瞭望，谨慎驾驶，注意避让。

(2) 本通告仅作为过往船舶的通航安全信息。

但仍有一些无法识别的养殖区并未包含在上述航行通告中（如 K1、K2 两个无证养殖区）。

K1

1. 37° 40.183'N 120° 05.3641'E

2. 37° 40.3809'N 120° 05.4012'E

3. 37° 40.3510'N 120° 07.7620'E

4. 37° 40.1509'N 120° 07.7339'E

K2

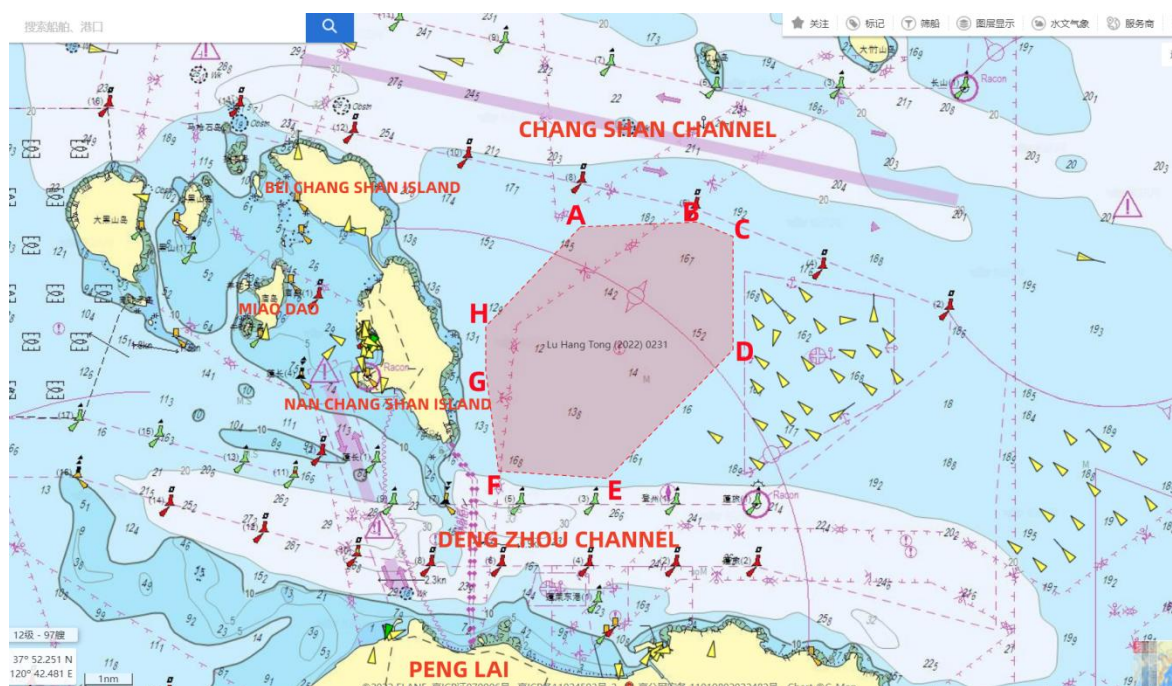
1. 37° 40.076'N 120° 05.460'E

2. 37° 40.057'N 120° 07.860'E

3. 37° 39.646'N 120° 07.801'E

4. 37° 39.629'N 120° 05.365'E

1.4 蓬莱港附近养殖区



为防止蓬莱港附近养殖区损害案件的发生，海事局发布了航行通告，公布了由下列坐标构成的养殖区。

- A: 37°57'54"N, 120°48'48"E
- B: 37°58'00"N, 120°51'48"E
- C: 37°57'42"N, 120°52'42"E
- D: 37°55'24"N, 120°52'42"E
- E: 37°52'48"N, 120°49'30"E
- F: 37°52'56"N, 120°46'42"E
- G: 37°55'00"N, 120°46'22"E
- H: 37°55'53"N, 120°46'22"E

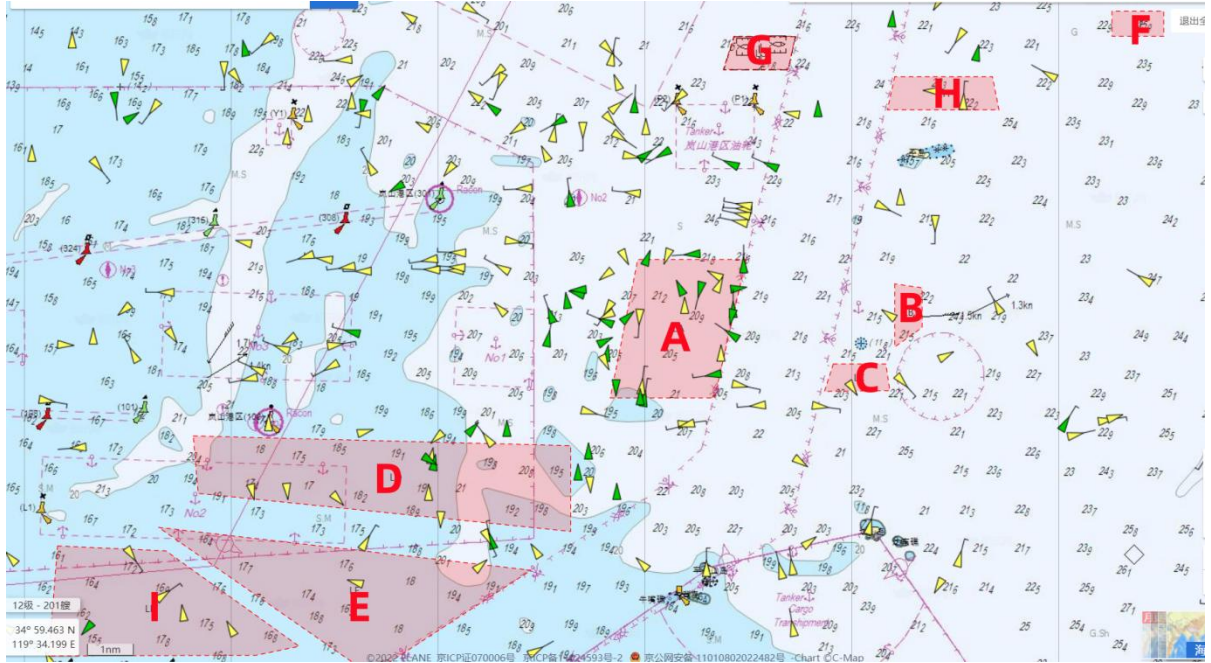
在该航行通告中，海事局特别提示：

- (1) 养殖区边界随季节变化，过往船舶应加强瞭望，谨慎驾驶，注意避让。
- (2) 本通告仅作为过往船舶的通航安全信息。

请注意：

仍有一些无法识别的养殖区未包含在上述航行通告，在该水域航行时值班驾驶员应当保持充分瞭望。

1.5 岚山港附近养殖区



岚山港附近的海上养殖区地理范围如下：

区域 A:

35°06'12.00"N, 119°50'16.00"E

35°03'18.00"N, 119°49'28.00"E

35°03'18.00"N, 119°46'48.00"E

35°06'12.00"N, 119°47'30.00"E

区域 B:

35°05'41.18"N, 119°54'03.73"E

35°04'21.77"N, 119°54'03.82"E

35°04'46.97"N, 119°54'45.81"E

35°05'35.97"N, 119°54'45.75"E

区域 C:

35°04'01.06"N, 119°52'29.91"E

35°03'26.77"N, 119°52'15.68"E

35°03'26.87"N, 119°53'56.63"E

35°04'01.14"N, 119°53'49.95"E

区域 D:

35°02' 30.00" N, 119°36' 11.0"E

35°02' 18.00" N, 119°45' 48.0"E

35°00'30.00"N, 119°45'48.00"E

35°01'18.00"N, 119°36'18.00"E

区域 E:

35°00'36.00"N, 119°35'18.00"E

34°59'42.00"N, 119°44'48.00"E

34°57'30.00"N, 119°40'42.00"E

区域 F:

35°11'23.43"N, 119°59'36.03"E

35°10'52.35"N, 119°59'36.03"E

35°10'52.34"N, 120°00'54.73"E

35°11'23.43"N, 120°00'54.74"E

区域 G:

35°10' 52.40" N, 119°49' 58.07"E

35°10' 10.63" N, 119°49'42.15"E

35°10' 10.75" N, 119°51'20.11"E

35°10' 52.34" N, 119°51'32.20"E

区域 H:

35-10'01.66"N, 119-54'03.38"E

35-09'19.73"N, 119-53'52.84"E

35-09'19.65"N, 119-56'42.48"E

35-10'01.58"N, 119-56'32.59"E

区域 I:

35°00.21' N, 119°32.72' E

35°00.10' N, 119°35.48' E

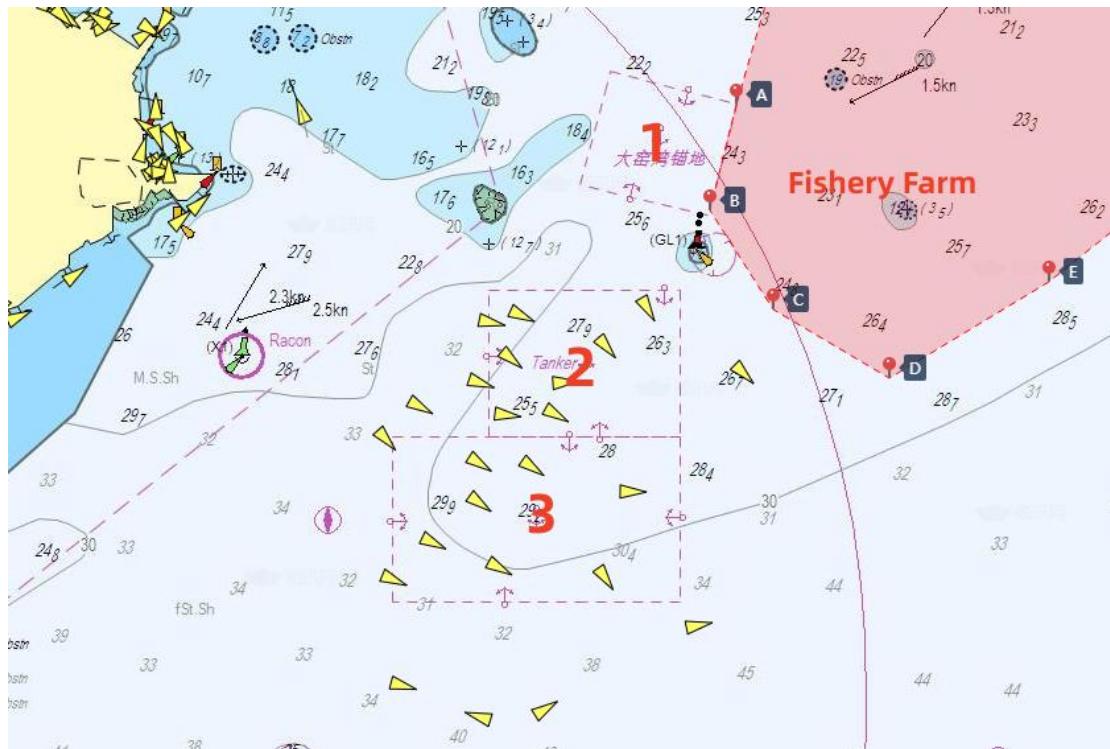
34°58.10' N, 119°38.87' E

34°57.91' N, 119°37.79' E

34°57.89' N, 119°32.50' E

2. 辽宁省沿海海上养殖区分布情况

2.1 大连港附近养殖区



我们把大连新港的三个锚地分别标示为 1, 2, 3 号做以下说明，海上养殖区的大致位置也在上图中标示。

- (1) 大窑湾锚地：几乎已经废弃，通常情况下没有船舶在此锚地锚泊。
- (2) 油轮锚地：通常情况下到港油轮会按照大连 VTS 的指令在此锚地锚泊。
- (3) 货轮锚地：通常情况下除油轮之外的其它船舶会在 VTS 的指令下在此锚地锚泊。

大连海上养殖区主要集中于大窑湾锚地和油轮锚地东北方向, 由于其位置紧邻锚地, 船舶误入养殖区的案件时有发生。近几年养殖区的面积在不断扩大, 其具体区域也一直在变化之中, 因此, 本通函提及的养殖区边界位置仅供参考。考虑到国际航行船舶通常情况下从锚地南面航行进入锚地, 在此情形下船舶在不向北穿越以下几点连线的情况下是安全的。

A 38°59.063'N, 122°02.923'E

B 38°57.775'N, 122°02.518'E

C 38°56.569'N, 122°03.503'E

D 38°55.731'N, 122°05.321'E

E 38°56.903'N, 122°07.820'E

3. 福建省沿海海上养殖区分布情况



3.1 宁德附近养殖区



养殖区的地理范围：

A: 26-44.55'N, 119-38.05'E

B: 26-45.85'N, 119-47.32'E

C: 26-35.50'N, 119-50.07'E

上图中的红色虚线代表有浮标标识的航道，在三沙湾的水道附近分布着密集的养殖区（图中黄色虚线标记），一些养殖区甚至分布在有浮标标识的航道中。



根据华泰此前处理三沙湾地区此类案件的经验，船舶误入养殖区的案件主要发生在两个区域。区域 A：白匏岛附近的航道，和区域 B：青山岛东航道(如上图所示)。

可能导致船舶误入养殖区案件发生的几点原因：

- (1) 上述两个水道中的洋流很强，流速可达 3-5 节。船舶顺流航行时，舵效不佳。
- (2) 航道可航宽度很窄但转向角度却很大，使船舶操作起来极其困难。
- (3) 大量的渔船在航道内航行或穿越航道，使得船舶避碰或养殖场的避让水域有限。
- (4) 密集的海上养殖区分布在航道周围甚至航道中。若船只给他船让路后未能及时返回主航道，则很容易进入养殖区。

3.2 南日岛附近养殖区



(1) 下表中的 1 - 5 点坐标位置连线与南日岛岸线围成的海域存在养殖区 (A)

序号	纬度	经度
1	25°10'11.40"N	119°33'21.49"E
2	25°08'21.21"N	119°32'38.23"E
3	25°08'29.60"N	119°30'00.45"E
4	25°12'02.13"N	119°25'31.21"E
5	25°14'20.22"N	119°26'12.61"E

(2) 下表中的 6 - 12 点坐标位置连线围成的海域存在养殖区(B)

序号	纬度	经度
6	25°14'46.49"N	119°27'18.73"E
7	25°15'05.50"N	119°26'41.66"E
8	25°15'54.12"N	119°27'05.14"E
9	25°16'04.18"N	119°27'46.54"E
10	25°15'40.15"N	119°28'04.47"E
11	25°15'55.24"N	119°30'38.34"E
12	25°16'40.51"N	119°30'01.26"E

(3) 下表中的 13 - 16 点位置连线围成的海域存在养殖区(C)

序号	纬度	经度
13	25°17'19.62"N	119°28'32.27"E
14	25°16'47.21"N	119°28'44.02"E
15	25°16'30.45"N	119°27'49.02"E
16	25°17'06.21"N	119°27'46.54"E

4. 河北省沿海海上养殖区分布情况



4.1 京唐港和秦皇岛港附近养殖区

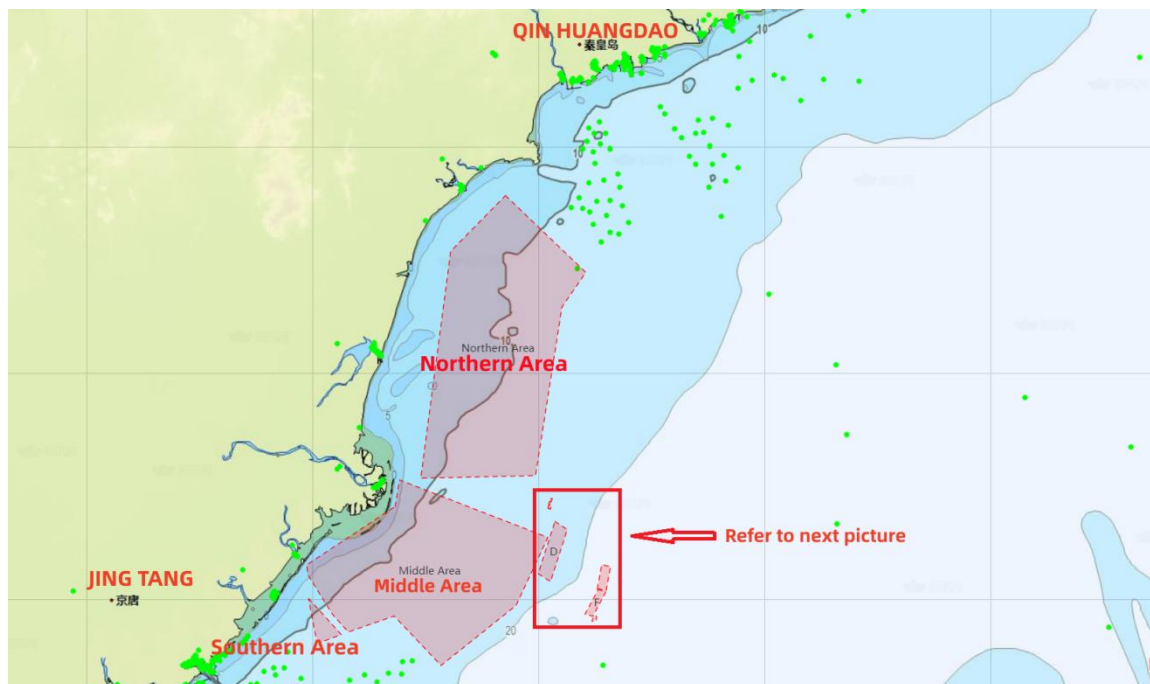


图 A



图 B

上述养殖区的地理范围 (图 A)

北部地区:

39°46.206'N, 119°28.744'E

39°40.711'N, 119°36.201'E

39°38.203'N, 119° 34.038'E

39°26.017'N, 119° 31.535'E

39°25.809'N, 119° 20.844'E

39°42.199'N, 119°23.656'E

中部地区:

39° 23.764'N, 119°18.403'E

39°25.713'N, 119°18.897'E

39°21.526'N, 119°32.678'E

39°16.629'N, 119°29.753'E

39°12.272'N, 119°22.749'E

39°15.829'N, 119°18.321'E

39°14.676'N, 119°14.098'E

39°15.965'N, 119°12.594'E

39°18.878'N, 119°10.277'E

39°19.582'N, 119°10.184'E

南部地区:

39°17.134'N, 119°10.338'E

39°14.491'N, 119°13.459'E

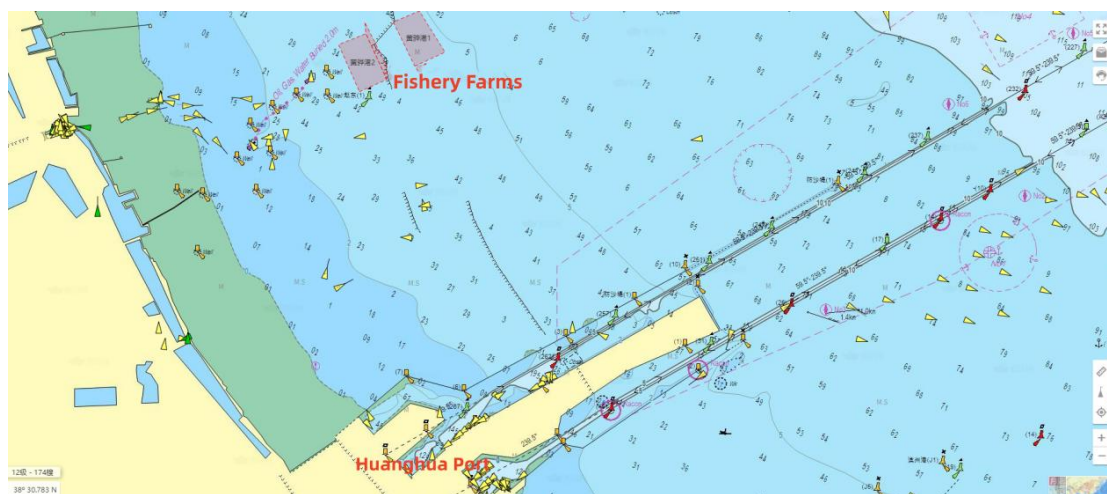
39°13.931'N, 119°11.451'E

39°14.371'N, 119°10.998'E

上述区域外零星分布的养殖区(图 B):

编号	地理范围	
A	39°23.656'N, 119°32.686'E	39°23.612'N, 119°32.908'E
	39°23.885'N, 119°32.996'E	39°23.923'N, 119°32.781'E
B	39°23.944'N, 119°32.812'E	39°24.145'N, 119°32.877'E
	39°24.122'N, 119°33.040'E	39°23.907'N, 119°32.983'E
C	39°24.142'N, 119°33.050'E	39°24.351'N, 119°33.148'E
	39°24.382'N, 119°32.936'E	39°24.165'N, 119°32.846'E
D	39°22.697'N, 119°33.341'E	39°22.121'N, 119°34.477'E
	39°18.3451'N, 119°32.925'E	39°18.921'N, 119°31.821'E
E	39°15.734'N, 119°36.891'E	39°15.463'N, 119°36.825'E
	39°15.498'N, 119°37.192'E	39°15.863'N, 119°37.239'E
F	39°17.774'N, 119°37.421'E	39°17.666'N, 119°38.142'E
	39°15.861'N, 119°36.901'E	39°15.973'N, 119°36.160'E
G	39°17.842'N, 119°37.287'E	39°19.570'N, 119°37.725'E
	39°19.430'N, 119°38.580'E	39°17.714'N, 119°38.137'E

4.2 黄骅港附近海域养殖区



黄骅海事局公布了以下 3 个海上养殖区的地理位置:

区域 1

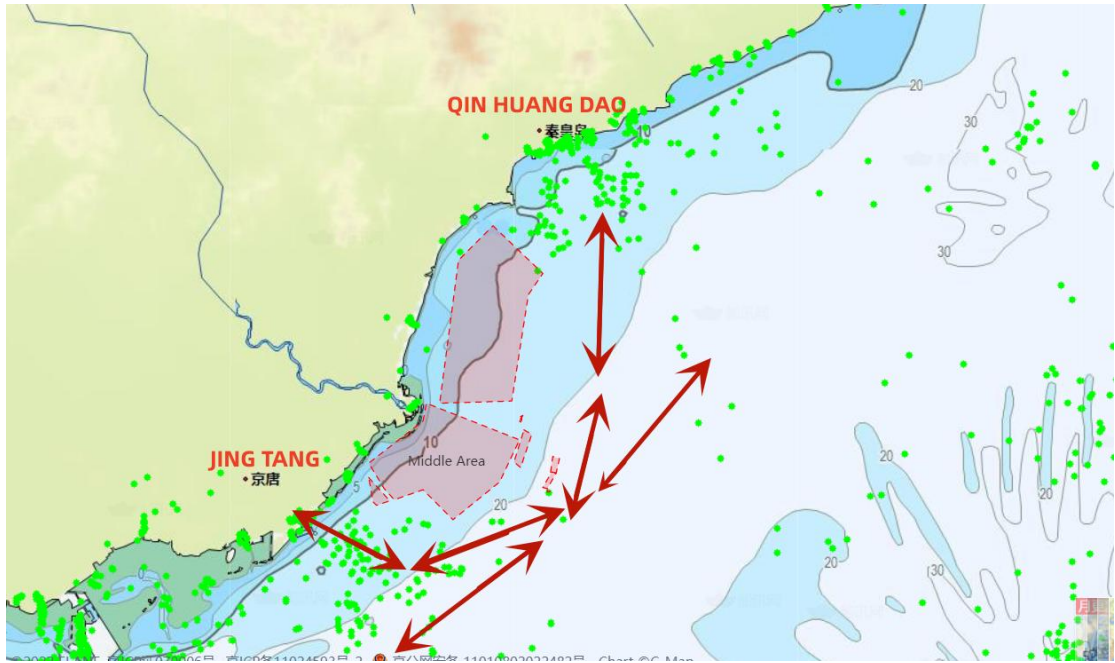
- A. $38^{\circ}30' 58.785''\text{N}, 117^{\circ}50' 09.520''\text{E}$
- B. $38^{\circ}31'22.311''\text{N}, 117^{\circ}51' 13.607''\text{E}$
- C. $38^{\circ}32'31.321''\text{N}, 117^{\circ}50' 19.209''\text{E}$
- D. $38^{\circ}32'12.661''\text{N}, 117^{\circ}49' 23.219''\text{E}$

区域 2

- A. $38^{\circ}30' 15.713''\text{N}, 117^{\circ}48' 12.299''\text{E}$
- B. $38^{\circ}30'36.743''\text{N}, 117^{\circ}49' 09.518''\text{E}$
- C. $38^{\circ}31'53.501''\text{N}, 117^{\circ}48' 25.760''\text{E}$
- D. $38^{\circ}31'34.229''\text{N}, 117^{\circ}47' 27.998''\text{E}$

区域 3

- A. $38^{\circ}30' 36.743''\text{N}, 117^{\circ}49' 09.518''\text{E}$
- B. $38^{\circ}30'58.785''\text{N}, 117^{\circ}49' 09.520''\text{E}$
- C. $38^{\circ}32'12.661''\text{N}, 117^{\circ}48' 23.219''\text{E}$
- D. $38^{\circ}31'53.501''\text{N}, 117^{\circ}48' 25.760''\text{E}$



根据华泰近些年的案件处理经验，河北省的海上养殖区多位于京唐港和秦皇岛港之间以及黄骅港附近海域。来往于京唐、天津港、黄骅港和秦皇岛、锦州港之间的船舶建议将航线远离海岸设计，以免不慎进入养殖区。

如有任何相关问题，欢迎咨询华泰海事总部（pni.bj@huatai-serv.com）或者华泰当地机构。

华泰保险经纪有限公司